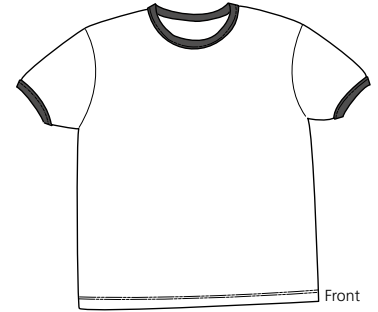


# Mens Camo Perfect Weight District Tee



Front



Back

## DT104C

\* 4.3-ounce, 100% ring spun combed cotton \* 40-singles fine knit for lived-in softness \* Rib knit crewneck

**Care Instructions:**  
 Machine wash cold inside out with like colors  
 Only non chlorine bleach  
 Tumble dry medium  
 Do not iron decoration

### Finished Measurements in Inches

Size	XS	S	M	L	XL	2XL	3XL	4XL
Chest	18	19.5	21	22.5	24	25.5	27	28.5
Length	26	27.5	29	30.5	32	33.5	34.5	35.5
Sleeve	8	8.25	8.5	8.75	9	9.25	9.5	9.75
Neck Width	6.5	7	7.5	7.5	7.75	7.75	8	8

Chest width measured 1" below arm hole. Front body length measured from high point shoulder to hem. Sleeve length measured from shoulder seam to hem. Neck measured by width, seam to seam.

### Color Chart

Colors	Winter Camo	Military Camo
Textile PMS		
General PMS	No Match	No Match

### Colors

	Winter Camo
	Military Camo

**Please Note:**  
 Colors shown are approximate and for reference only. For closest match see PMS colors, or for exact match, returnable samples and grommets are available.  
 \*The pigment-dyeing process infuses each garment with unique character. Please allow for slight color variations in production and washing.  
 \*Please note, special considerations must be taken when printing white ink on pigment-dyed garments.