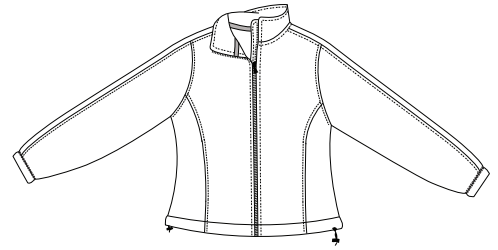
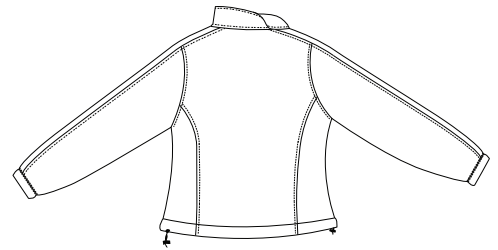


Port Authority® - Ladies Soft Shell Two-Tone Jacket

PORT | AUTHORITY®



Front



Back

L794

* 100% polyester interlock surface with lamination bonded to 100% polyester fleece *
 3000MM waterproof rating * 3000G/M2 breathability rating * Gently contoured silhouette *
 Storm flap with chin guard * Open hem with drawcord and toggle * Two front zipper pocket *
 No colorblocking on elbows or shoulders

Care Instructions:
 Machine wash warm. Wash inside out with like colors. Line dry. Do not bleach. Do not iron. Do not dry clean.

Finished Measurements in Inches

Size	XS	S	M	L	XL	XXL	1X	2X
Width	19	20	21	22.5	24	25.5	28	30.5
Length	22.5	23.5	24.5	25.5	26.5	27.5	28.5	29.5
Sleeve	30.5	31.5	32.5	33.5	34.5	35.5	36	37

Width measured 1" below armhole. Length measured from center back neck seam to bottom hem.
 Sleeve measured from center back neck seam to cuff.

Colors

	Sahara/Dark Mocha
	Black/Graphite
	White/Graphite
	Navy/Graphite
	Terracotta/Black

Please Note:
 Colors shown are approximate and for reference only. For closest match see PMS colors, or for exact match, returnable samples and grommeted samples are available.

Color Chart

Colors	Sahara	Black	White	Navy	Terracotta
Textile PMS	No Match	No Match	No Match	No Match	No Match
General PMS	7535 C	440 C	663 C	532 C	No Match