

SPEC SHEET + MEASUREMENTS

PORT AUTHORITY.

Port Authority® Core Colorblock Wind Jacket. J330

Product photo



With colorblock side panels and a subtle grid texture, this contemporary jacket protects against wind and rain. A jersey lining adds warmth to this exceptionally priced, wear-anywhere style.

- 100% shadow grid polyester doobby shell
- 100% polyester jersey lining
- Packable zip-in hood with contrast zipper
- Interior wind flap
- Open front pockets
- Elastic cuffs
- Port Pocket™ for easy embroidery access
- Elastic hem

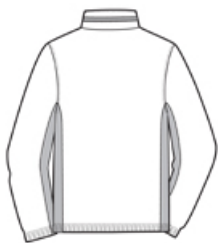
CARE INSTRUCTIONS

Machine wash cold, gentle cycle with like colors, use mild detergent. Do not bleach. Remove immediately. Do not allow to lay on itself when wet. Tumble dry low. Cool iron if needed. Do not dry clean.

Sketches



front



back

SPEC SHEET + MEASUREMENTS

PORT AUTHORITY

Port Authority® Core Colorblock Wind Jacket. J330

PRODUCT MEASUREMENTS

	XS	S	M	L	XL	2XL	3XL	4XL
Body Length at Back	25 3/4	26 3/4	27 3/4	28 3/4	29 3/4	30 3/4	31 1/4	31 3/4
Chest	21	22 1/2	24	25 1/2	27	28 1/2	30 1/2	32 1/2
Sleeve Length from Center Back	35 3/4	36 1/2	37 1/4	38	38 3/4	39 1/2	40 1/4	41

Body Length at Back: Measured from high point shoulder to finished hem at back.

Chest: Measured across the chest one inch below armhole when laid flat.

Sleeve Length from Center Back: Measure from Center Back neck to shoulder point to sleeve hem.

SIZE CHARTS

	XS	S	M	L	XL	2XL	3XL	4XL
Chest	32-34	35-37	38-40	41-43	44-46	47-49	50-53	54-57

SPEC SHEET + MEASUREMENTS

PORT AUTHORITY.

Port Authority® Core Colorblock Wind Jacket. J330

HOW TO MEASURE



CHEST

Measure under the arm and around the fullest part of the chest with arms down, keeping tape horizontal.