



STAY-COOL WICKING
LAYERABLE WARMTH
STRETCH
FLATLOCK SEAMS FOR COMFORT
REFLECTIVE DETAILS

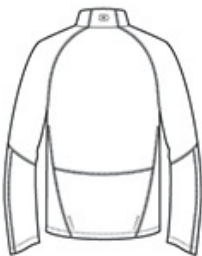
- 91/9 poly/spandex jersey with stay-cool wicking technology
- Lightly brushed interior
- Reflective OGIO Endurance heat transfer label for tag-free comfort
- Zip-through cadet collar with molded cord pull
- Reflective O heat transfer at back neck
- Raglan sleeves with shaped cuffs
- Drop tail hem with reflective stacked O heat transfers at lower back panels
- Reflective O Endurance heat transfer at front left hem

CARE INSTRUCTIONS

Machine wash cold with like colors. Do not bleach. Tumble dry low. Cool iron. Do not use fabric softener. Do not dry clean.



front



back

HOW TO MEASURE

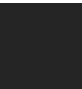


CHEST WIDTH
Measure under the arm and around the fullest part of the chest with arms down, keeping tape horizontal.


SIZE CHART

	XS	S	M	L	XL	2XL	3XL	4XL
Chest	32-34	35-37	38-40	41-43	44-46	47-49	50-53	54-57


COLOR INFORMATION



Blacktop
PMS NTR BLACK



Electric Blue
PMS 7686C



Gear Grey
PMS 425C