

SPEC SHEET + MEASUREMENTS



OGIO® Cadmium Jacket. OE502

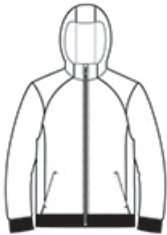
Product photo



LUX COTTON-RICH SOFTNESS
LAYERABLE WARMTH
STRETCH
FLATLOCK SEAMS FOR COMFORT
REFLECTIVE DETAILS

- 4.3-ounce, 56/38/6 French terry cotton/poly/spandex
- Reflective OGIO heat transfer label for tag-free comfort
- 3-panel hood
- Zip-through collar with chin guard
- Metalux zipper with molded cord pull
- Set-in sleeves
- Reflective O heat transfer at right back shoulder
- Lower front pockets
- Reflective O heat transfer at left pocket
- 2x2 flat knit cuffs and hem

Sketches



front



back

CARE INSTRUCTIONS

Machine wash cold with like colors. Do not bleach. Tumble dry low. Warm iron if necessary

SPEC SHEET + MEASUREMENTS



OGIO® Cadmium Jacket. OE502

PRODUCT MEASUREMENTS

	XS	S	M	L	XL	2XL	3XL	4XL
Body Length at Back	26	27	28	29	30	31	31 1/2	32
Chest	18 1/4	19 3/4	21 1/4	22 3/4	24 1/4	25 3/4	27 3/4	29 3/4
Sleeve Length from Center Back	34 1/4	35	35 3/4	36 1/2	37 1/4	38	38 3/4	39 1/2

Body Length at Back: Measured from high point shoulder to finished hem at back.

Chest: Measured across the chest one inch below armhole when laid flat.

Sleeve Length from Center Back: Measure from Center Back neck to shoulder point to sleeve hem.

SIZE CHARTS

	XS	S	M	L	XL	2XL	3XL	4XL
Chest	32-34	35-37	38-40	41-43	44-46	47-49	50-53	54-57

SPEC SHEET + MEASUREMENTS



OGIO® Cadmium Jacket. OE502

HOW TO MEASURE



CHEST

Measure under the arm and around the fullest part of the chest with arms down, keeping tape horizontal.