

*Eddie Bauer*

## Eddie Bauer® Highpoint Fleece Jacket. EB240



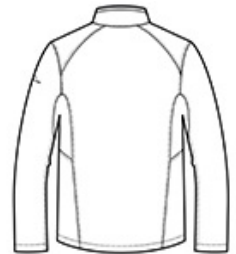
Made for movement, this sophisticated, stretch-infused twill fleece jacket has a smooth face and brushed fleece backing. Tonal welding details at the pockets and streamlined tailoring give it a refined look for indoor and outdoor uses. Molded reverse coil zippers. Front zippered pockets. Contrast Eddie Bauer heat transfer logo on the left sleeve. Made of 8.3-ounce, 94/6 poly/spandex fleece with an anti-pill finish.

### CARE INSTRUCTIONS

Machine wash cold. Do not bleach. Tumble dry low. Remove promptly. Cool iron if needed. Do not use softeners



front



back

### HOW TO MEASURE



#### CHEST WIDTH

Measure under the arm and around the fullest part of the chest with arms down, keeping tape horizontal.

### SIZE CHART

	XS	S	M	L	XL	2XL	3XL	4XL
Chest	32-34	35-37	38-40	41-43	44-46	48-50	52-54	55-57

### COLOR INFORMATION



Black  
PMS NTR BLACK  
C



Metal Grey  
PMS COOL GREY  
9 C