

# SPEC SHEET + MEASUREMENTS



## Eddie Bauer® Trail Soft Shell Jacket. EB542

### Product photo



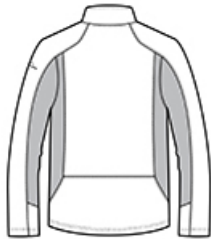
With 3K/3K waterproof and breathability fabric ratings, this knit soft shell has stretch for ease of movement and transitions from the workday streets to the weekend trails—regardless of the forecast. Exclusive StormRepel® durable water-repellent (DWR) technology keeps you warmer and drier.

- 100% polyester knit shell with DWR coating bonded to a water-resistant laminated film insert
- 100% polyester brushed microfleece interior
- StormRepel® durable water-repellent (DWR) technology
- Front tricot-lined zippered pockets
- Reverse coil zippers
- Open cuffs and open hem
- Decoration access pocket
- Reflective heat transfer Eddie Bauer logo on left sleeve

### Sketches



front



back

# SPEC SHEET + MEASUREMENTS



Eddie Bauer® Trail Soft Shell Jacket. EB542

## PRODUCT MEASUREMENTS

	XS	S	M	L	XL	2XL	3XL	4XL
Body Length at Back	26 3/4	27 3/4	28 3/4	29 3/4	30 3/4	31 3/4	32 1/4	32 3/4
Chest	18	19 1/2	21	22 1/2	24	25 1/2	27 1/2	29 1/2
Sleeve Length	34 1/4	35	35 3/4	36 1/2	37 1/4	38	38 3/4	39 1/2

**Body Length at Back:** Measured from high point shoulder to finished hem at back.

**Chest:** Measured across the chest one inch below armhole when laid flat.

**Sleeve Length:** Start at center of neck and measure down shoulder, down sleeve to hem.

## SIZE CHARTS

	XS	S	M	L	XL	2XL	3XL	4XL
Chest	32-34	35-37	38-40	41-43	44-46	48-50	52-54	55-57

## HOW TO MEASURE



### CHEST

Measure under the arm and around the fullest part of the chest with arms down, keeping tape horizontal.

# SPEC SHEET + MEASUREMENTS



Eddie Bauer® Trail Soft Shell Jacket. EB542

## COLORS

---



Black/ Black  
PMS BLACK  
C



Metal Grey/  
Grey Steel  
PMS 425C



River Blue  
Navy/ River  
Blue Navy  
PMS 533C