

**Port Authority® Collective Soft Shell Jacket.
J901**



With a subtle mini ripstop texture, this sophisticated soft shell has double-needle stitching throughout and sleek design lines. The water-resistant film and DWR finish combine to resist wind and rain for weather protection.

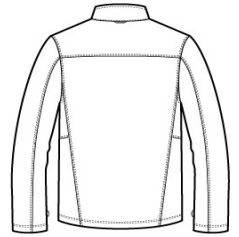
- Can be zipped in and secured by snap attachments inside an outer Collective layer
- 94/6 poly/spandex woven mini ripstop with a DWR finish bonded to a water-resistant film insert and a 100% polyester brushed tricot interior
- 1000MM fabric waterproof rating
- 1000G/M2 fabric breathability rating
- Slightly longer length
- Molded center front zipper
- Front reverse-coil zippered covered pockets

CARE INSTRUCTIONS

Machine wash cold with like colors; do not use fabric softener; tumble dry low; remove promptly; only non-chlorine bleach when needed; cool iron if necessary; do not dry clean.



front



back

HOW TO MEASURE



CHEST WIDTH

Measure under the arm and around the fullest part of the chest with arms down, keeping tape horizontal.

SIZE CHART

	XS	S	M	L	XL	2XL	3XL	4XL
Chest	32-34	35-37	38-40	41-43	44-46	47-49	50-53	54-57

COLOR INFORMATION

				
Deep Black PMS NTR BLACK	Graphite PMS 7540C	Gusty Grey PMS COOL GRAY	Night Sky Blue PMS 654C	River Blue Navy 8C