

# SPEC SHEET + MEASUREMENTS



OGIO® Tread Polo. OG135

## Product photo



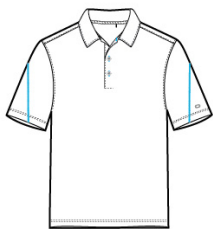
This polo dares to tread on the edge with its slightly linear stripe and black pinpoint dot appearance.

- 4.6-ounce, 73/21/6 cotton/poly/spandex jacquard jersey with stay-cool wicking technology
- OGIO heat transfer label for tag-free comfort
- Self-fabric collar
- 3-button placket with flat metal buttons
- Contrast coverstitching on back yoke and sleeves
- Set-in, open hem sleeves
- Rubber heat transfer O on left sleeve

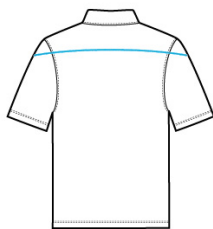
## CARE INSTRUCTIONS

Machine wash cold with like colors. Do not bleach. Tumble dry low. Cool iron. Do not use fabric softener. Do not dry clean.

## Sketches



front



back

# SPEC SHEET + MEASUREMENTS



OGIO® Tread Polo. OG135

## PRODUCT MEASUREMENTS

	XS	S	M	L	XL	2XL	3XL	4XL
Body Length at Front	28	29	30	31	32	33	33 1/2	34
Chest	18 1/4	19 3/4	21 1/4	22 3/4	24 1/4	25 3/4	27 3/4	29 3/4
Sleeve Length	17	17 3/4	18 1/2	19 1/4	20	20 3/4	21 1/2	22 1/4

**Body Length at Front:** Measure from high point shoulder to lowest point of hem at front.

**Chest:** Measured across the chest one inch below armhole when laid flat.

**Sleeve Length:** Start at center of neck and measure down shoulder, down sleeve to hem.

## SIZE CHARTS

	XS	S	M	L	XL	2XL	3XL	4XL
Chest	32-34	35-37	38-40	41-43	44-46	47-49	50-53	54-57

## HOW TO MEASURE



### CHEST

Measure under the arm and around the fullest part of the chest with arms down, keeping tape horizontal.

# SPEC SHEET + MEASUREMENTS



OGIO® Tread Polo. OG135

## COLORS

---



Blacktop  
Heather  
PMS 7540C



Blue Heather



Grey Heather