

SPEC SHEET + MEASUREMENTS



OGIO® Women's Exaction Soft Shell Jacket. LOG725

Product photo



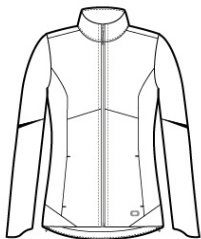
Sophistication meets great weather protection in this sleek, technical soft shell. A durable water-repellent (DWR) finish sheds rain and stretch adds easy mobility.

- 82/18 nylon/spandex bonded to 100% poly interlock with a water-resistant film insert
- 8000MM fabric waterproof rating
- 5000G/M² fabric breathability rating
- Cadet collar
- OGIO heat transfer label for tag-free comfort
- OGIO locker loop
- Waterproof matte zipper with OGIO zipper pull
- Welding details at shoulders
- Welded zippered front pockets
- Heat transfer O on front and back
- Open welded cuffs and hem

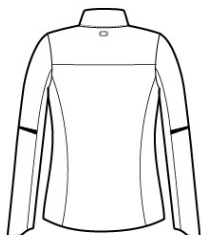
CARE INSTRUCTIONS

Machine wash cold with like colors. Do not bleach. Tumble dry low. Cool iron. Do not use fabric softener. Do not dry clean.

Sketches



front



back

SPEC SHEET + MEASUREMENTS



OGIO® Women's Exaction Soft Shell Jacket. LOG725

PRODUCT MEASUREMENTS

	XS	S	M	L	XL	2XL	3XL	4XL
Body Length at Front	27 1/4	27 3/4	28 1/4	28 3/4	29 1/4	29 3/4	30 1/4	30 3/4
Bust	18 1/4	19 1/4	20 1/4	21 3/4	23 1/4	24 3/4	26 3/4	28 3/4
Size	2	4/6	8/10	12/14	16/18	20/22	24/26	28/30
Sleeve Length	32 3/4	33 1/4	33 3/4	34 3/8	35	35 5/8	36	36 3/8

Body Length at Front: Measure from high point shoulder to lowest point of hem at front.

Bust: Measured across the chest one inch below armhole when laid flat.

Sleeve Length: Start at center of neck and measure down shoulder, down sleeve to hem.

SIZE CHARTS

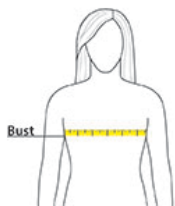
	XS	S	M	L	XL	2XL	3XL	4XL
Bust	32-34	35-36	37-38	39-41	42-44	45-47	48-51	52-55
Size	2	4/6	8/10	12/14	16/18	20/22	24/26	28/30

SPEC SHEET + MEASUREMENTS



OGIO® Women's Exaction Soft Shell Jacket. LOG725

HOW TO MEASURE



BUST

Measure under the arm and around the fullest part of the bust with arms down, keeping tape horizontal.