

# Port Authority® Market Full-Length Bib Apron. A800

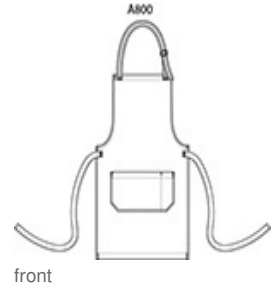


Craftsman styling creates a signature look in this apron that's perfect for bistros, pubs, cooking classes and more. The wrinkle-resistant fabric has a denim-like look which blends performance with style to make a sophisticated statement.

- 7-ounce, 60/40 cotton/poly yarn-dyed twill
- Adjustable contrast webbing neck strap with antique-finish metal slider
- Patch pocket, pen pocket
- Self-fabric waist ties
- Contrast stitch details
- Measures: 25"w x 34.5"l

### CARE INSTRUCTIONS

Machine Wash Cold, Only Non Chlorine Bleach when needed, Tumble Dry Low, Do Not Dry Clean.



### SIZE CHART

|                   | OSFA   |
|-------------------|--------|
| Length            | 34 1/2 |
| Apron Waist Width | 25     |

### COLOR INFORMATION



Ash Grey



Dark Midnight