

SPEC SHEET + MEASUREMENTS



Eddie Bauer® Smooth Fleece Full-Zip. EB246

Product photo



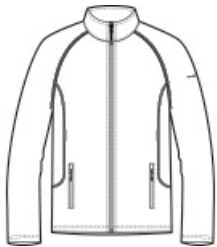
Built for versatility, this smooth-faced, brushed back fleece is the ideal base layer. It has a sleek, low-profile fit and is adaptable to everything from outdoor adventures to indoor comfort.

- 5.6-ounce, 100% polyester fleece
- Contrast coverstitch details
- Reverse coil zippers
- Open cuffs and hem
- Front zippered pockets
- Contrast heat transfer Eddie Bauer logo on left sleeve

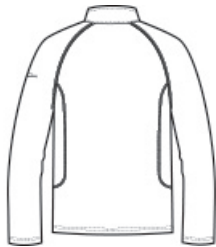
CARE INSTRUCTIONS

Machine Wash Cold, Inside Out With Like Colors, Do Not Use Fabric Softener, Only Non-Chlorine Bleach When Needed, Tumble Dry Low, Do Not Iron, Do Not Dry Clean.

Sketches



front



back

SPEC SHEET + MEASUREMENTS



Eddie Bauer® Smooth Fleece Full-Zip. EB246

PRODUCT MEASUREMENTS

	XS	S	M	L	XL	2XL	3XL	4XL
Body Length at Back	27	28	29	30	31	32	32 1/2	33
Chest	18 1/2	20	21 1/2	23	24 1/2	26	28	30
Sleeve	33 3/4	34 1/2	35 1/4	36	36 3/4	37 1/2	38 1/4	39

Body Length at Back: Measured from high point shoulder to finished hem at back.

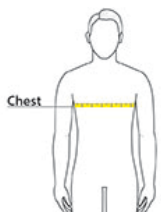
Chest: Measured across the chest one inch below armhole when laid flat.

Sleeve: Measure from Center Back neck to shoulder point to sleeve hem.

SIZE CHARTS

	XS	S	M	L	XL	2XL	3XL	4XL
Chest	32-34	35-37	38-40	41-43	44-46	48-50	52-54	55-57

HOW TO MEASURE



CHEST

Measure under the arm and around the fullest part of the chest with arms down, keeping tape horizontal.