

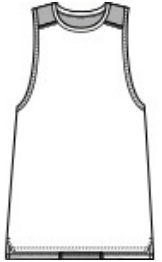


With a subtle heather texture and mesh panels at targeted heat zones, this tank has moisture-wicking technology and breathability for optimum performance.

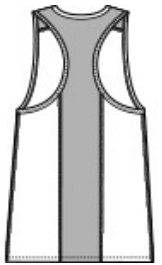
- 4-ounce, 100% polyester
- Dyed-to-match neck band
- Mesh panels at shoulders and underarms
- Tag-free label
- Mesh back panel
- Side vents
- Drop tail hem

CARE INSTRUCTIONS

Machine wash cold with like colors. Do not use fabric softener. Do not bleach. Tumble dry low. Remove promptly. Cool iron if needed. Do not dry clean.



front



back

HOW TO MEASURE



BUST

Measure under the arm and around the fullest part of the bust with arms down, keeping tape horizontal.

SIZE CHART

| | XS | S | M | L | XL | XXL | 3XL | 4XL |
|------|-------|-------|-------|-------|-------|-------|-------|-------|
| Size | 2 | 4/6 | 8/10 | 12/14 | 16/18 | 20/22 | 24/26 | 28/30 |
| Bust | 32-34 | 35-36 | 37-38 | 39-41 | 42-44 | 45-47 | 48-51 | 52-55 |

COLOR INFORMATION



Black Heather/
Black
PMS NTR BLACK
C



Dark Royal
Heather/ Black
PMS 2767C



Light Grey Heather/
Light Grey
PMS NO
MATCH/COOL
GREY 8C