

## SPEC SHEET + MEASUREMENTS



### Nike Dry Raglan Polo. NKBV6047

#### Product photo



With bold contrasting collar and sleeves, this polo boasts raglan sleeves for easier movement and Dri-FIT moisture management technology to help keep you cooler and drier. Design features include a flat knit collar, two-button placket with dyed-to-match buttons, open hem sleeves, side vents and a back seaming detail. A contrast Swoosh design trademark is embroidered on the left sleeve. Made of 3.9-ounce, 100% polyester Dri-FIT fabric.

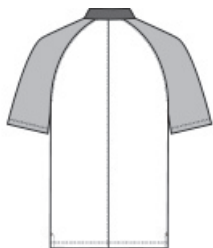
#### CARE INSTRUCTIONS

Care instructions. Machine wash cold (30c). Wash inside out; wash with like colors, do not use softeners, do not use bleach, tumble dry low, do not iron, do not dry clean.

#### Sketches



front



back

# SPEC SHEET + MEASUREMENTS



Nike Dry Raglan Polo. NKBV6047

## PRODUCT MEASUREMENTS

	XS	S	M	L	XL	2XL	3XL	4XL
Body Length at Back	28 3/4	29 1/8	29 1/4	30 3/8	31 1/2	32 5/8	33 7/8	35
Chest	18 3/4	20 1/2	22	23 5/8	25 5/8	27 1/2	29 1/2	31 1/2
Sleeve Length	14 1/4	14 5/8	15 1/8	15 1/2	16	16 5/8	17 1/8	17 3/4

**Body Length at Back:** Measured from high point shoulder to finished hem at back.

**Chest:** Measured across the chest one inch below armhole when laid flat.

**Sleeve Length:** Start at center of neck and measure down shoulder, down sleeve to hem.

## SIZE CHARTS

	XS	S	M	L	XL	2XL	3XL	4XL
Chest	32-35	35-37 1/2	37 1/2 -41	41-44	44-48 1/2	48 1/2 -53 1/2	53 1/2 - 58	58-63

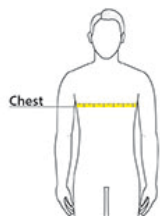
# SPEC SHEET + MEASUREMENTS



Nike Dry Raglan Polo. NKBV6047

## HOW TO MEASURE

---



### **CHEST**

Measure under the arm and around the fullest part of the chest with arms down, keeping tape horizontal.