



Ultra-soft meets cozy warmth in these layerable sherpa fleece pullovers. Ideal for cooler days, they are comfortable, versatile and designed to fend off the chill in style.

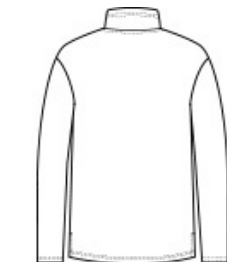
- 6.8-ounce, 100% polyester sherpa fleece
- Reverse coil zipper
- Dyed-to-match neck tape, zipper and zipper pull
- Open cuffs and hem
- Side vents

CARE INSTRUCTIONS

Machine wash cold separately. Do not bleach. Tumble dry low. Remove promptly. Cool iron if necessary.



front



back

HOW TO MEASURE



BUST
Measure under the arm and around the fullest part of the bust with arms down, keeping tape horizontal.

SIZE CHART

	XS	XS	S	S	M	M	L	L	XL	XL	XXL	3XL	3XL	4XL	4XL
Size	2	2	4/6	4/6	8/10	8/10	12/14	12/14	16/18	16/18	20/22	24/26	24/26	28/30	28/30
Bust	32-34	32-34	35-36	35-36	37-38	37-38	39-41	39-41	42-44	42-44	45-47	48-51	48-51	52-55	52-55

COLOR INFORMATION



Black
PMS NTR BLACK
C



Charcoal
PMS 432C



Grey Heather
PMS NO MATCH



Navy Heather
PMS NO MATCH



Oatmeal Heather
PMS NO MATCH



Pop Raspberry
Heather
PMS NO MATCH