



CornerStone[®] Duck Bonded Soft Shell Jacket CSJ60

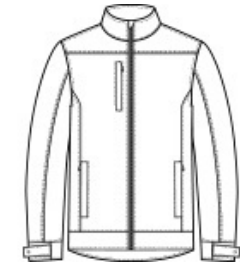


By combining popular soft shell outerwear technology with duck cloth, and an ultra-warm fleece interior, this jacket is a workwear must-have that helps you get the job done in any kind of weather.

- 100% cotton canvas shell with a DWR finish bonded to a water-resistant film insert and 100% polyester microfleece lining
- Metal front zipper
- Zippered chest pocket
- Zippered hand pockets
- Three interior pockets
- Adjustable metal snaps at cuffs

CARE INSTRUCTIONS

Machine Wash Cold. Gentle Cycle. Only Non-Chlorine.
Bleach When Needed. Line Dry. Cool Iron If Necessary. Do Not Dry Clean.



front



back

HOW TO MEASURE




CHEST WIDTH
Measure under the arm and around the fullest part of the chest with arms down, keeping tape horizontal.


SIZE CHART

	XS	S	M	L	XL	2XL	3XL	4XL
Chest	32-34	35-37	38-40	41-43	44-46	47-49	50-53	54-57


COLOR INFORMATION



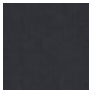
Black
PMS BLACK C



Charcoal
PMS 432C



Duck Brown
PMS 7568C



Navy Blue
PMS 532C