

**Port Authority® Ladies Cozy Fleece Hoodie. L132**

Ultra-soft meets cozy warmth in this layerable sherpa fleece hoodie. Ideal for cooler days, it's comfortable, versatile and designed to fend off the chill in style.

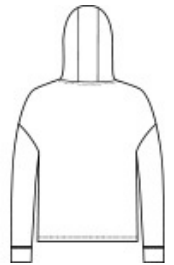
- 6.8-ounce, 100% polyester sherpa fleece
- Three-panel hood
- Drop shoulder
- Open cuffs and hem

**CARE INSTRUCTIONS**

Machine wash cold separately. Do not bleach. Tumble dry low. Remove promptly. Cool iron if necessary.



front



back

**HOW TO MEASURE**



**BUST**

Measure under the arm and around the fullest part of the bust with arms down, keeping tape horizontal.

**SIZE CHART**

	XS	S	M	L	XL	XXL	3XL	4XL
Size	2	4/6	8/10	12/14	16/18	20/22	24/26	28/30
Bust	32-34	35-36	37-38	39-41	42-44	45-47	48-51	52-55

**COLOR INFORMATION**



Black  
PMS BLACK C



Grey Heather



Marshmallow  
PMS 7527C