

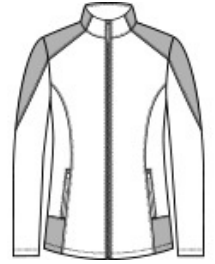


With solid and heather grid fleece options, this smooth-faced, brushed-back jacket makes a warm, sleek outer- or mid-layer. Stretch delivers easy movement and all-day comfort.

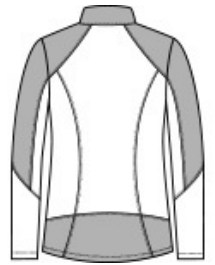
- 8-ounce, 94/6 polyester/spandex fleece
- Molded center front zipper
- Shoulder and sleeve piecing details
- Front reverse-coil zippered pockets
- Open cuffs and hem

**CARE INSTRUCTIONS**

Machine wash cold. Only non-chlorine bleach when needed. Tumble dry low. Cool iron if necessary. Do not dry clean.



front



back

**HOW TO MEASURE**



**BUST**

Measure under the arm and around the fullest part of the bust with arms down, keeping tape horizontal.

**SIZE CHART**

|       | XS    | S     | M     | L     | XL    | XXL   | 3XL   | 4XL   |
|-------|-------|-------|-------|-------|-------|-------|-------|-------|
| Size  | 2     | 4/6   | 8/10  | 12/14 | 16/18 | 20/22 | 24/26 | 28/30 |
| Chest | 32-34 | 35-36 | 37-38 | 39-41 | 42-44 | 45-47 | 48-51 | 52-55 |

**COLOR INFORMATION**



Deep Black  
PMS BLACK C



Grey Smoke  
Heather/ Grey  
Smoke



River Blue Navy  
PMS 533C