

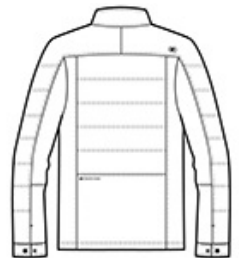


PERFORMANCE HYBRID  
 WATER-RESISTANT  
 WIND-RESISTANT

- 100% poly woven shell bonded to a 100% poly knit back with a laminated film insert for wind and water resistance
- 100% poly woven quilted overlays
- Core insulation
- Zip-through cadet collar
- Reflective OGIO Endurance heat transfer label for tag-free comfort
- Tonal rubber O at back right shoulder
- Rubber O Endurance at back left panel
- Reverse coil zippers
- Rubber-wrapped O zipper pull
- OGIO metal snap
- Set-in sleeves
- Tonal rubber O at left sleeve
- OGIO snap closure cuffs
- Front zippered pockets



front



back

**HOW TO MEASURE**



**CHEST WIDTH**

Measure under the arm and around the fullest part of the chest with arms down, keeping tape horizontal.

**SIZE CHART**

	XS	S	M	L	XL	2XL	3XL	4XL
Chest	32-34	35-37	38-40	41-43	44-46	47-49	50-53	54-57

**COLOR INFORMATION**



Blacktop  
 PMS NTR BLACK

Propel Navy  
 PMS 533C