

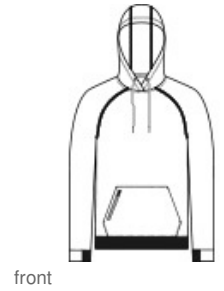


Achieve what you strive for in this elevated style that has a soft, natural hand and a slub appearance. PosiCharge technology keeps the colors strong and vibrant.

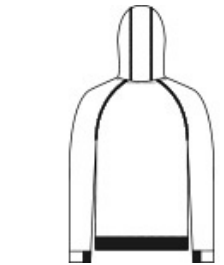
- 8.9-ounce, 90/10 poly/cotton fleece
- Three-panel hood
- Tear-away removable label
- Raglan sleeves with coverstitching
- Zippered mesh pocket on front pouch pocket
- Half elastic, half self-fabric cuffs and hem for comfort

CARE INSTRUCTIONS

Machine Wash Cold With Like Colors. Do Not Use Fabric Softener. Do Not Bleach. Tumble Dry Low. Remove Promptly. Cool Iron If Needed. Do Not Dry Clean.



front



back

HOW TO MEASURE



CHEST WIDTH

Measure under the arm and around the fullest part of the chest with arms down, keeping tape horizontal.

SIZE CHART

| | XS | S | M | L | XL | 2XL | 3XL | 4XL |
|-------|-------|-------|-------|-------|-------|-------|-------|-------|
| Chest | 32-34 | 35-37 | 38-40 | 41-43 | 44-46 | 47-49 | 50-53 | 54-57 |

COLOR INFORMATION

| | | | | |
|--|---|---|---|---|
|  |  |  |  |  |
| Black PMS BLACK C | Deep Red PMS 201C | Graphite PMS COOL GRAY 11C | True Navy PMS 533C | True Royal PMS 7687C |