

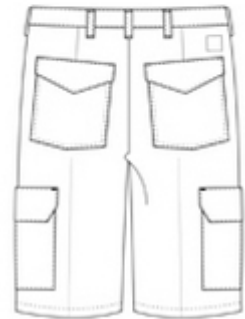
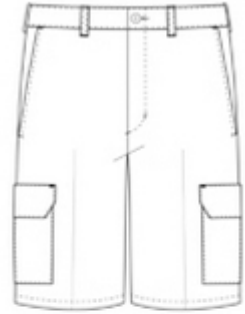


## Red Kap® Industrial Cargo Short PT66



Built for the person who carries a lot of stuff, our IL50\*-strength Cargo Short has snap cargo pockets to pack what you need to get work done.

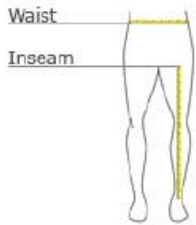
- 8-ounce, 65/35 poly/cotton twill with Touch-tex™ technology for superior color retention, soil release and wickability
- Heavy-duty brass ratcheting zipper with button closure
- Two front pockets
- 12-inch inseam
- Two back patch pockets with spade pocket flaps and snap closure
- Two patch leg pockets with inverted center pleats, one-piece pocket flaps with mitered corners and two snap closures



### CARE INSTRUCTIONS

Industrial Wash. Home Wash. Light soil wash.

### HOW TO MEASURE



**WAIST**  
Measure waist at the height pants are normally worn, and keep tape comfortably loose.

**INSEAM**  
Measure a similar style pant that fits well and is the desired length. Measure from the crotch seam to the hem.

### SIZE CHART

SIZE	30	32	34	36	38	40	42	44	46	48	50
<b>WAIST</b>	30 1/2	32 1/2	34 1/2	36 1/2	38 1/2	40 1/2	42 1/2	44 1/2	46 1/2	48 1/2	50 1/2
<b>INSEAM</b>	12	12	12	12	12	12	12	12	12	12	12

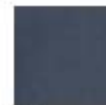
### COLOR INFORMATION



Black  
PMS PROCESS BLACK C



Khaki  
PMS 7536 C



Navy  
PMS 296 C