

Port Authority® Long Sleeve UV Daybreak Shirt  
W960

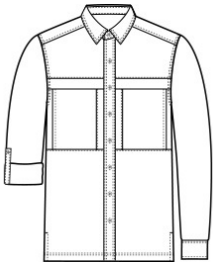


Sun and moisture are no problem for this versatile, lightweight, highly breathable shirt. Relaxed styling makes it perfect for outdoor or indoor wear.

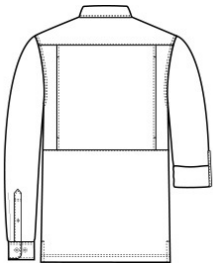
- 2.2-ounce, 100% polyester poplin
- 2.5-ounce, 100% polyester poplin (White)
- Moisture-wicking
- UPF rating of 30
- Hidden button-down collar
- Dyed-to-match buttons
- Two chest pockets with concealment flaps and hook and loop closures
- Vented back panel with mesh ventilation
- Rounded adjustable cuffs
- Roll sleeves with button tabs
- Straight hem with side vents

CARE INSTRUCTIONS

Fabric & Mesh Trim: 100% Polyester. Fasten Closures. Hook & Loop Before Washing. Do Not Wring. Machine Wash Cold Gentle Cycle With Like Colors. Only Non-Chlorine Bleach If Needed. Fabric Softener Not Recommended. Tumble Dry Low. Remove Promptly.

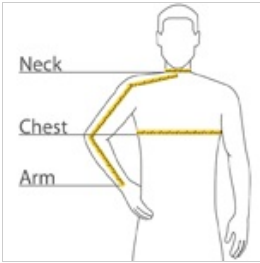


front



back

HOW TO MEASURE



**CHEST WIDTH**  
Measure under the arm and around the fullest part of the chest with arms down, keeping tape horizontal.


**NECK**  
Measure around the fullest part of the neck at the base.

**ARM**  
Place hand on hip. Start at the center of the back of the neck and measure across the shoulder, to the elbow, and then down to the wrist.


SIZE CHART

|       | XS          | S           | M           | L           | XL          | 2XL         | 3XL         | 4XL         |
|-------|-------------|-------------|-------------|-------------|-------------|-------------|-------------|-------------|
| Chest | 32-34       | 35-37       | 38-40       | 41-43       | 44-46       | 47-49       | 50-53       | 54-57       |
| Neck  | 14 1/2 - 15 | 15 - 15 1/2 | 15 1/2 - 16 | 16 - 16 1/2 | 16 1/2 - 17 | 17 - 17 1/2 | 17 1/2 - 18 | 18 - 18 1/2 |
| Arm   | 30 1/2      | 32          | 34          | 35          | 36 1/2      | 37 1/2      | 38 1/2      | 39 1/2      |


COLOR INFORMATION




Gusty Grey  
PMS COOL GREY 8C



Light Blue  
PMS 644C



Oat  
PMS NO MATCH



White