

# SPEC SHEET + MEASUREMENTS



## Mercer+Mettle® Double-Knit Bomber. MM3000

### Product photo



Smart, stylish and made for layering night or day, this double-knit jacket blends a sport-inspired shape with a casual-cool attitude. It offers all the traditional bomber design cues, like rib knit collar and cuffs, with a more style-forward, streamlined fit.

### Fabric+Weight

- 8.3-ounce, 100% double-knit polyester

### Features+Benefits

- Easy care
- Rib knit collar and cuffs
- Exposed zipper with matte black pull
- Front pockets

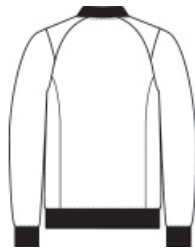
### CARE INSTRUCTIONS

Turn Garment Inside Out. Machine Wash Cold With Like Colors. Do Not Use Fabric Softener. Do Not Bleach. Tumble Dry Low. Remove Promptly. Cool Iron. If Necessary.

### Sketches



front



back

# SPEC SHEET + MEASUREMENTS



## Mercer+Mettle® Double-Knit Bomber. MM3000

### PRODUCT MEASUREMENTS

	XS	S	M	L	XL	2XL	3XL	4XL
Body Length at Back	26	27	28	29	30	31	31 3/4	32 1/2
Chest	18 1/4	19 3/4	21 1/4	22 3/4	24 3/4	26 3/4	29 1/4	32 1/4
Raglan Sleeve Length	33 3/4	34 1/2	35 1/4	36	36 3/4	37 1/2	38 1/4	39

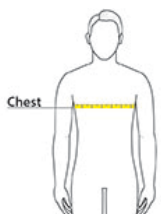
**Body Length at Back:** Measured from high point shoulder to finished hem at back.

**Chest:** Measured across the chest one inch below armhole when laid flat.

### SIZE CHARTS

	XS	S	M	L	XL	2XL	3XL	4XL
Chest	32-34	35-37	38-40	41-43	44-47	48-51	52-56	57-61

### HOW TO MEASURE



#### CHEST

Measure under the arm and around the fullest part of the chest with arms down, keeping tape horizontal.

# SPEC SHEET + MEASUREMENTS



Mercer+Mettle® Double-Knit Bomber. MM3000

## COLORS

---



Anchor Grey  
PMS 426C



Deep Black  
PMS BLACK  
C



Night Navy  
PMS 532C



Townsend  
Green