

# SPEC SHEET + MEASUREMENTS



## Eddie Bauer® Stretch Soft Shell Vest. EB546

### Product photo



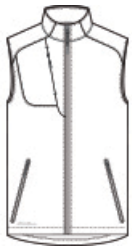
This fleece-lined vest offers next-level mobility and performance thanks to 3K/3K waterproof, breathable fabric with 4-way stretch and a durable water-repellent (DWR) finish.

- 90/10 polyester/spandex bonded to a waterproof film insert and 100% polyester fleece lining
- Interior storm flap
- Chin guard
- Invisible zippered chest pocket
- Reverse coil center front zipper
- Eddie Bauer logo zipper pull
- Reverse coil zippered hand pockets
- Embroidered Eddie Bauer logo on right hem

### CARE INSTRUCTIONS

Machine Wash Cold With Like Colors. Do Not Use Fabric Softener. Do Not Bleach. Tumble Dry Low. Cool Iron. Do Not Dry Clean.

### Sketches



front



back

# SPEC SHEET + MEASUREMENTS



Eddie Bauer® Stretch Soft Shell Vest. EB546

## PRODUCT MEASUREMENTS

	XS	S	M	L	XL	2XL	3XL	4XL
Body Length at Back	28	29	30	31	32	33	33 1/2	34
Chest	19	20 1/2	22	23 1/2	25	26 1/2	28 1/2	30 1/2

**Body Length at Back:** Measured from high point shoulder to finished hem at back.

**Chest:** Measured across the chest one inch below armhole when laid flat.

## SIZE CHARTS

	XS	S	M	L	XL	2XL	3XL	4XL
Chest	32-34	35-37	38-40	41-43	44-46	48-50	52-54	55-57

## HOW TO MEASURE



### CHEST

Measure under the arm and around the fullest part of the chest with arms down, keeping tape horizontal.

# SPEC SHEET + MEASUREMENTS



Eddie Bauer® Stretch Soft Shell Vest. EB546

## COLORS

---



Deep Black  
PMS BLACK  
C



Iron Gate  
PMS 7540C



River Blue  
Navy  
PMS 533C