



Carhartt® Super Dux™ Soft Shell Vest CT105535



This soft shell vest combines iconic Carhartt looks with unbeatable weather protection. The nylon is 35% lighter than traditional duck but with twice the abrasion resistance.

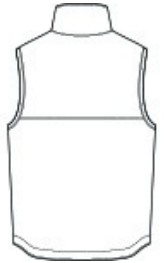
- 8.1-ounce, 97/3 nylon/elastane
- 100% polyester stretch taffeta lining
- Rain Defender® durable water repellent
- Wind Fighter® technology tames wind
- Rugged Flex® technology for ease of movement
- Reverse coil center front zipper with kissing welt
- Zip-through cadet collar
- Secure interior pockets
- Two lower front pockets
- Drop tail hem for added coverage
- Carhartt-strong, triple-stitched main seams
- Carhartt label sewn on left pocket
- Relaxed fit

CARE INSTRUCTIONS

Machine Wash Warm Like Colors. Non-Chlorine Bleach.
Tumble Dry Low. Do Not Use Fabric Softeners. Cool Iron. Do Not Dry Clean. Exclusive Trimming.

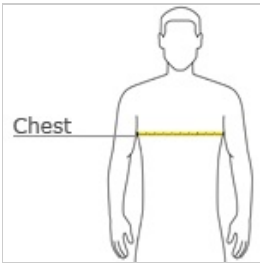


front



back

HOW TO MEASURE



CHEST WIDTH

Measure under the arm and around the fullest part of the chest with arms down, keeping tape horizontal.

SIZE CHART

	S	M	L	XL	2XL	3XL
Chest	34-36	38-40	42-44	46-48	50-52	54-56

COLOR INFORMATION

Please note: PMS code information is shown only when an exact match is available.



Black
PMS BLACK C



Gravel
PMS 11C



Greige
PMS COOL GRAY
1C



Navy
PMS 533C