



# District® V.I.T.™ Super Heavyweight Fleece Hoodie DT6600



The customer favorite V.I.T. fleece, now in a premium 12-ounce weight.

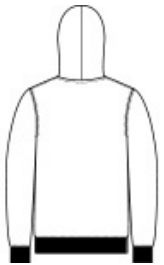
- 12-ounce, 80/20 combed ring spun cotton/poly (Solids, Oatmeal Heather)
- 100% ring spun cotton face (Solids, Oatmeal Heather, Light Heather Grey)
- 75/25 combed ring spun cotton/polyester (Light Heather Grey)
- 60/40 combed ring spun cotton/polyester (Heathers)
- DTG-friendly
- Jersey-lined hood
- Dyed-to-match draw cords and twill back neck tape
- 2x1 rib knit cuffs and hem
- Side seamed
- Tear-away label

## CARE INSTRUCTIONS

Machine Wash Cold With Like Colors. Do Not Bleach. Tumble Dry Low. Warm Iron If Necessary.



front



back

## HOW TO MEASURE



### CHEST WIDTH

Measure under the arm and around the fullest part of the chest with arms down, keeping tape horizontal.

## SIZE CHART

	XS	S	M	L	XL	2XL	3XL	4XL
Chest	32-34	35-37	38-40	41-43	44-46	47-49	50-53	54-57

## COLOR INFORMATION

Please note: PMS code information is shown only when an exact match is available.



Black  
PMS BLACK C



Charcoal  
PMS 7540C



Classic Red  
PMS 200C



Deep Royal  
PMS 7687C



Duck Brown  
PMS 7568C



Forest Green  
PMS 7736C



Grey Frost  
PMS COOL GRAY  
10C



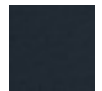
Heathered  
Charcoal  
PMS 7540C



Light Heather Grey  
PMS COOL GRAY  
5C



Navy Heather  
PMS 533C



New Navy  
PMS 533C



Oatmeal Heather