

SPEC SHEET + MEASUREMENTS

Brooks Brothers

Brooks Brothers® Double-Knit Full-Zip. BB18210

Product photo



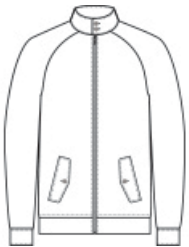
Pay homage to the epitome of casual cool in this classic jacket, allowing a broad range of movement and featuring just the right amount of pop in the details.

- 9.1-ounce, 57/43 polyester/cotton double-knit
- Cadet collar with button closure
- Faux horn buttons with Brooks Brothers logo
- Metal zipper pull with Brooks Brothers logo
- Buttoned flap pockets
- Lined raglan sleeves

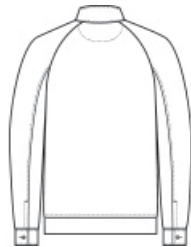
CARE INSTRUCTIONS

Machine Wash Cold With Like Colors. Do Not Use Fabric Softener. Do Not Bleach. Tumble Dry Low. Remove Promptly. Cool Iron If Necessary.

Sketches



front



back

SPEC SHEET + MEASUREMENTS

Brooks Brothers

Brooks Brothers® Double-Knit Full-Zip. BB18210

PRODUCT MEASUREMENTS

	XS	S	M	L	XL	2XL	3XL	4XL
Body Length at Back	27 1/2	28	28 1/2	29	29 1/2	30	30 1/2	31
Chest	19 1/2	21	22 1/2	24	26	28	30 1/2	33 1/2
Raglans and Dolmans Sleeve Length	34 1/4	35	35 3/4	36 1/2	37 1/4	38	38 3/4	39 1/2

Body Length at Back: Measured from high point shoulder to finished hem at back.

Chest: Measured across the chest one inch below armhole when laid flat.

Raglans and Dolmans Sleeve Length: Measure from neck edge to finished hem.

SIZE CHARTS

	XS	S	M	L	XL	2XL	3XL	4XL
Chest	32-34	35-37	38-40	41-43	44-47	48-51	52-56	57-61

SPEC SHEET + MEASUREMENTS

Brooks Brothers

Brooks Brothers® Double-Knit Full-Zip. BB18210

HOW TO MEASURE



CHEST

Measure under the arm and around the fullest part of the chest with arms down, keeping tape horizontal.

COLORS



Deep Black
PMS BLACK
C



Night Navy
PMS 4280C



Windsor Grey
PMS 426C