

SPEC SHEET + MEASUREMENTS

Brooks Brothers

Brooks Brothers® Women's Mid-Layer Stretch Button Jacket. BB18205

Product photo



A structured double-knit style with a luxuriously soft hand, this versatile woman's jacket adds a touch of utilitarian flair with a full button-front closure. The jacket can be cinched with a hidden waist drawcord for a more form-fitting look.

- 8-ounce, 76/22/2 polyester/rayon/spandex double-knit
- Faux horn buttons with Brooks Brothers logo
- Adjustable buttoned cuffs
- Hidden button-flap front pockets

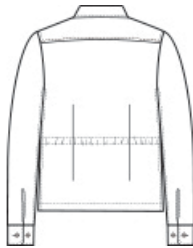
CARE INSTRUCTIONS

Machine Wash Cold With Like Colors. Do Not Use Fabric Softener. Do Not Bleach. Tumble Dry Low. Remove Promptly. Cool Iron If Necessary.

Sketches



front



back

SPEC SHEET + MEASUREMENTS

Brooks Brothers

Brooks Brothers® Women's Mid-Layer Stretch Button Jacket. BB18205

PRODUCT MEASUREMENTS

	XS	S	M	L	XL	2XL	3XL	4XL
Size	2	4/6	8/10	12/14	16/18	20/22	24/26	28/30
Body Length at Back	23	23 1/2	24	24 1/2	25	25 1/2	26	26 1/2
Bust	18 1/2	19 1/2	20 1/2	22	23 1/2	25	27	29
Sleeve Length from Center Back	31 1/4	31 3/4	32 1/4	32 7/8	33 1/2	34 1/8	34 1/2	34 7/8

Body Length at Back: Measured from high point shoulder to finished hem at back.

Bust: Measured across the chest one inch below armhole when laid flat.

Sleeve Length from Center Back: Measure from Center Back neck to shoulder point to sleeve hem.

SIZE CHARTS

	XS	S	M	L	XL	2XL	3XL	4XL
Size	2	4/6	8/10	12/14	16/18	20/22	24/26	28/30
Bust	32-34	35-36	37-38	39-41	42-44	45-47	48-51	52-55

SPEC SHEET + MEASUREMENTS

Brooks Brothers

Brooks Brothers® Women's Mid-Layer Stretch Button Jacket. BB18205

HOW TO MEASURE



BUST

Measure under the arm and around the fullest part of the bust with arms down, keeping tape horizontal.

COLORS



Black Heather
PMS 426C



Navy Blazer
Heather
PMS 446C



Windsor Grey
Heather
PMS 426C