

# SPEC SHEET + MEASUREMENTS



## OGIO® Motion Polo. OG152

### Product photo



Set yourself in motion with this elevated, easy moving polo that feels lux and performs with pill and snag resistance—whether you're on the job or on the go.

- 6.5-ounce, 84/10/6 poly/rayon/spandex with stay-cool wicking technology
- UPF rating of 30
- OGIO heat transfer label for tag-free comfort
- Embossed OGIO neck taping
- Self-fabric collar
- 1-button placket with merrow stitch bar tack
- Sandwich tone buttons
- Raglan sleeves
- Merrow stitching detail at shoulders
- Embroidered dyed-to-match O logo icon on left sleeve
- Side vents

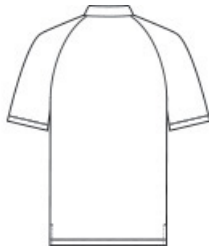
### CARE INSTRUCTIONS

Machine Wash Cold With Like Colors. Do Not Use Fabric Softener. Do Not Bleach. Tumble Dry Low. Cool Iron If Necessary.

### Sketches



front



back

# SPEC SHEET + MEASUREMENTS



OGIO® Motion Polo. OG152

## PRODUCT MEASUREMENTS

	XS	S	M	L	XL	2XL	3XL	4XL
Body Length at Back	27 1/4	28 1/4	29 1/4	30 1/4	31 1/4	32 1/4	32 3/4	33 1/4
Chest	17 1/2	19	20 1/2	22	23 1/2	25	27	29
Raglans and Dolmans Sleeve Length	16 1/4	17	17 3/4	18 1/2	19 1/4	20	20 3/4	21 1/2

**Body Length at Back:** Measured from high point shoulder to finished hem at back.

**Chest:** Measured across the chest one inch below armhole when laid flat.

**Raglans and Dolmans Sleeve Length:** Measure from neck edge to finished hem.

## SIZE CHARTS

	XS	S	M	L	XL	2XL	3XL	4XL
Chest	32-34	35-37	38-40	41-43	44-46	47-49	50-53	54-57

# SPEC SHEET + MEASUREMENTS



OGIO® Motion Polo. OG152

## HOW TO MEASURE

---



### CHEST

Measure under the arm and around the fullest part of the chest with arms down, keeping tape horizontal.

## COLORS

---



Blacktop  
PMS BLACK  
C



Blue Mist  
PMS 2158C



Greystone  
PMS COOL  
GREY 7C



Spar Blue  
PMS 2189C



Tarmac Grey  
PMS 7540C