

SPEC SHEET + MEASUREMENTS



Eddie Bauer® Women's Packable Quilted Full-Zip. EB515

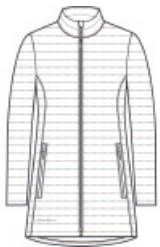
Product photo



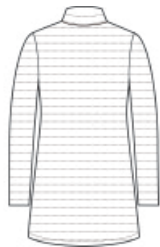
Designed with traditional quilt lines, this insulated full-zip is built for warmth and weather-resistant performance.

- 100% polyester ripstop
- 5.4-ounce, 100% polyester blown fill
- PU coating on back of shell
- Durable water-repellent (DWR) finish
- Full-length interior storm flap with chin guard
- Exposed, molded zippers with Eddie Bauer logo pulls
- Elastic cuffs
- Zippered hand pockets
- Slight drop tail hem
- Decoration access pocket
- Packs into zippered left hand pocket
- Longer length with a double zipper
- Contrast heat transfer Eddie Bauer heat logo on right hem

Sketches



front



back

CARE INSTRUCTIONS

Machine Wash Cold With Like Colors. Do Not Use Fabric Softener. Do Not Bleach. Tumble Dry Low. Cool Iron, If Necessary. Do Not Dry Clean.

SPEC SHEET + MEASUREMENTS



Eddie Bauer® Women's Packable Quilted Full-Zip. EB515

PRODUCT MEASUREMENTS

	XS	S	M	L	XL	2XL	3XL	4XL
Size	2	4/6	8/10	12/14	16/18	20/22	24/26	28/30
Body Length at Back	32	32 1/2	33	33 1/2	34	34 1/2	35	35 1/2
Bust	18 7/8	19 7/8	20 7/8	22 3/8	23 7/8	25 3/8	27 3/8	29 3/8
Sleeve Length from Center Back	31 1/2	32	32 1/2	33 1/8	33 3/4	34 3/8	34 3/4	35 1/8

Body Length at Back: Measured from high point shoulder to finished hem at back.

Bust: Measured across the chest one inch below armhole when laid flat.

Sleeve Length from Center Back: Measure from Center Back neck to shoulder point to sleeve hem.

SIZE CHARTS

	XS	S	M	L	XL	2XL	3XL	4XL
Size	2	4/6	8/10	12/14	16/18	20/22	24/26	28/30
Bust	32-33	34-35	36-37	38-40	41-43	44-46	47-49	50-52

SPEC SHEET + MEASUREMENTS



Eddie Bauer® Women's Packable Quilted Full-Zip. EB515

HOW TO MEASURE



BUST

Measure under the arm and around the fullest part of the bust with arms down, keeping tape horizontal.

COLORS



Adriatic Blue
PMS 4161C



Black
PMS Black C



Metal Grey
PMS COOL
GRAY 10C