

SPEC SHEET + MEASUREMENTS



Nike Pro Hooded Jacket. NKFQ4761

Product photo



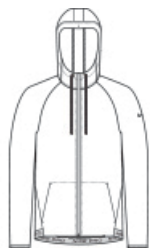
Developed for training and beyond, Nike Pro is all about feeling confident and doing your best. This breathable jacket steps up with Dri-FIT moisture management technology for optimal performance.

- 3.5-ounce, 80/20 polyester/elastane Dri-FIT fabric with at least 75% recycled content
- Adjustable hood
- Dyed-to-match drawcords
- Exposed dyed-to-match zipper
- Zippered front pockets
- Elastic cuffs
- Navy/Game Royal has a contrast color hood panel
- Contrast heat transfer Swoosh logo on left sleeve
- Includes a Nike Pro branded elastic back hem

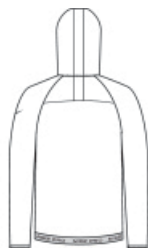
CARE INSTRUCTIONS

Wash With Like Colors. Do Not Use Softeners. Remove Immediately. Do Not Allow To Lay On Itself When Wet.

Sketches



front



back

SPEC SHEET + MEASUREMENTS



Nike Pro Hooded Jacket. NKFQ4761

PRODUCT MEASUREMENTS

| | XS | S | M | L | XL | 2XL | 3XL | 4XL |
|---------------------|--------|--------|--------|--------|--------|--------|--------|--------|
| Body Length at Back | 28 1/2 | 28 7/8 | 29 1/4 | 30 1/8 | 30 7/8 | 31 5/8 | 32 1/2 | 33 1/4 |
| Chest | 18 7/8 | 20 1/2 | 22 | 23 5/8 | 25 3/8 | 27 1/2 | 29 3/4 | 31 1/2 |

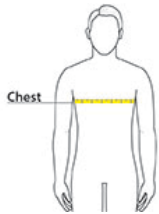
Body Length at Back: Measured from high point shoulder to finished hem at back.

Chest: Measured across the chest one inch below armhole when laid flat.

SIZE CHARTS

| | XS | S | M | L | XL | 2XL | 3XL | 4XL |
|-------|-------|--------------|--------------|-------|--------------|-------------------|----------------|-------|
| Chest | 32-35 | 35-37 1/2 | 37 1/2-41 | 41-44 | 44-48 1/2 | 48 1/2 -53 1/2 | 53 1/2 - 58 | 58-63 |

HOW TO MEASURE



CHEST

Measure under the arm and around the fullest part of the chest with arms down, keeping tape horizontal.

SPEC SHEET + MEASUREMENTS



Nike Pro Hooded Jacket. NKFQ4761

COLORS



Anthracite
PMS 446C



Black
PMS BLACK
C



Navy/ Game
Royal
PMS 533C