

SPEC SHEET + MEASUREMENTS

PORT&CO.

Port & Co™ Performance Pullover Hooded Tee. PC380H

Product photo



Rated UPF50 to help combat harmful UV rays, this tee also performs with Dry Zone® moisture-wicking technology to keep you cool, dry and comfortable.

- 3.8-ounce, 100% polyester
- Removable tag for comfort and relabeling
- UPF rating of 50
- Raglan sleeves

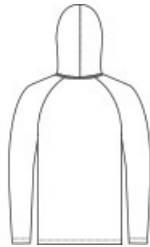
CARE INSTRUCTIONS

Machine Wash Cold Inside Out With Like Colors. Do Not Use Fabric Softener. Only Non-Chlorine Bleach When Needed. Tumble Dry Low. Do Not Iron.

Sketches



front



back

SPEC SHEET + MEASUREMENTS

PORT&CO.

Port & Co™ Performance Pullover Hooded Tee. PC380H

PRODUCT MEASUREMENTS

| | S | M | L | XL | 2XL | 3XL | 4XL |
|-----------------------------------|--------|--------|--------|--------|--------|--------|--------|
| Body Length at Back | 27 3/4 | 28 3/4 | 29 3/4 | 30 3/4 | 31 3/4 | 32 1/4 | 32 3/4 |
| Chest | 20 | 21 1/2 | 23 | 24 1/2 | 26 | 28 | 30 |
| Raglans and Dolmans Sleeve Length | 34 | 34 5/8 | 35 1/4 | 35 7/8 | 36 1/2 | 37 1/4 | 38 |

Body Length at Back: Measured from high point shoulder to finished hem at back.

Chest: Measured across the chest one inch below armhole when laid flat.

Raglans and Dolmans Sleeve Length: Measure from neck edge to finished hem.

SIZE CHARTS

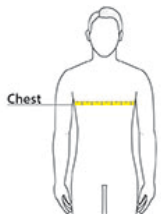
| | S | M | L | XL | 2XL | 3XL | 4XL |
|-------|-------|-------|-------|-------|-------|-------|-------|
| Chest | 35-37 | 38-40 | 41-43 | 44-46 | 47-49 | 50-53 | 54-57 |

SPEC SHEET + MEASUREMENTS

PORT&CO.

Port & Co™ Performance Pullover Hooded Tee. PC380H

HOW TO MEASURE



CHEST

Measure under the arm and around the fullest part of the chest with arms down, keeping tape horizontal.

COLORS



Carolina Blue
PMS 7682C



Charcoal
PMS 4294C



Jet Black
PMS BLACK
C



Neon Green
PMS 902C



Neon Orange
PMS 811C



Red
PMS 200C



Silver



True Navy
PMS 533C



True Royal
PMS 7687C



White