

# SPEC SHEET + MEASUREMENTS



## OGIO® Origin Jacket. OE503

### Product photo



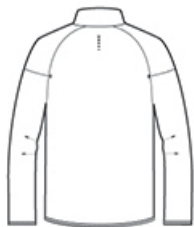
### COTTON-RICH SOFTNESS STAY-COOL WICKING LAYERABLE WARMTH

- 8.1-ounce, 64/36 cotton/poly flatback knit
- OGIO heat transfer label for tag-free comfort
- Zip-through collar
- Exposed coil zipper with molded cord pull
- Stacked O heat transfers at center back
- Welded front zippered pockets with locking pulls
- O heat transfer at right pocket
- Raglan sleeves with welded, articulated elbows
- O heat transfer at upper left sleeve
- OGIO binding at cuffs and hem
- Slight drop tail hem

### Sketches



front



back

### CARE INSTRUCTIONS

Machine wash cold with like colors. Remove promptly. Only non chlorine bleach when needed. Tumble dry low. Cool iron if needed. Do not dry clean

# SPEC SHEET + MEASUREMENTS



OGIO® Origin Jacket. OE503

## PRODUCT MEASUREMENTS

	XS	S	M	L	XL	2XL	3XL	4XL
Chest	19	20 1/2	22	23 1/2	25	26 1/2	28 1/2	30 1/2
Body Length at Back	27	28	29	30	30	31	32	32 1/2
Sleeve Length from Center Back	33 3/4	34 1/2	35 1/4	36	36 3/4	37 1/2	38 1/4	39

**Chest:** Measured across the chest one inch below armhole when laid flat.

**Body Length at Back:** Measured from high point shoulder to finished hem at back.

**Sleeve Length from Center Back:** Measure from Center Back neck to shoulder point to sleeve hem.

## SIZE CHARTS

	XS	S	M	L	XL	2XL	3XL	4XL
Chest	32-34	35-37	38-40	41-43	44-46	47-49	50-53	54-57

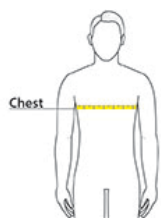
# SPEC SHEET + MEASUREMENTS



OGIO® Origin Jacket. OE503

## HOW TO MEASURE

---



### **CHEST**

Measure under the arm and around the fullest part of the chest with arms down, keeping tape horizontal.