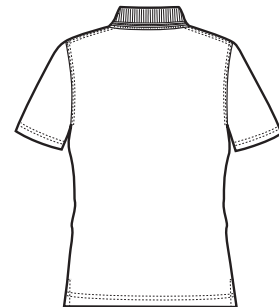


# Ladies Pocketless Pique polo



Front



Back

## CS403

- \* 6.8-ounce, 100% spun polyester
- \* Traditional, relaxed look
- \* Flat knit collar
- \* 3-button placket
- \* Dyed-to-match buttons
- \* Open hem sleeves

### Care Instructions:

Wash Cold  
Tumble Dry Low

### Finished Measurements in Inches

Size	XS	S	M	L	XL	XXL	Plus 1X	Plus 2X
Chest	19"	20"	21"	22 1/2"	24"	25 1/2"	27 1/2"	29 1/2"
Length	26 1/2"	27"	27 1/2"	28 1/2"	29 1/2"	30 1/2"	31"	31 1/2"
Sleeve	15 3/4"	16 1/2"	17 1/4"	18"	18 3/4"	19 1/2"	20 1/4"	21"

### Colors

	Black
	Navy
	Royal
	White
	Red

Please Note:  
Colors shown are approximate and for reference only. For closest match see PMS colors, or for exact match, returnable samples and grommeted samples are available.

### Color Chart

Base Color	Black	Navy	Royal	White	Red
Textile PMS	No Match	No Match	No Match	No Match	No Match
General PMS	ProBlk C	432 C	534 C	WmGy 1 C	703 C