



This exceptionally soft, midweight fleece jacket will keep you warm during everyday excursions and it's offered at an unbeatable price.

- 8.3-ounce, 100% polyester
- Twill-taped neck
- Reverse coil zipper
- Chin guard
- Knotted zipper pulls
- Front zippered pockets
- Open cuffs

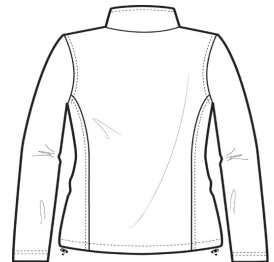
CARE INSTRUCTIONS

Machine wash cold. Gentle cycle with like colors. Non-chlorine bleach when needed. Tumble dry low. Remove promptly. Do not iron.

[Tips For Effectively Screen Printing Polyester Fabrics](#)

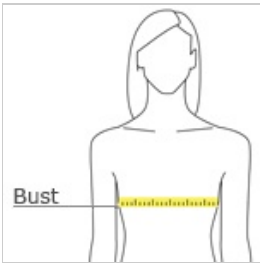


front



back

HOW TO MEASURE



BUST

Measure under the arm and around the fullest part of the bust with arms down, keeping tape horizontal.

SIZE CHART

| | XS | S | M | L | XL | XXL | 3XL | 4XL |
|------|-------|-------|-------|-------|-------|-------|-------|-------|
| Size | 2 | 4/6 | 8/10 | 12/14 | 16/18 | 20/22 | 24/26 | 28/30 |
| Bust | 32-34 | 35-36 | 37-38 | 39-41 | 42-44 | 45-47 | 48-51 | 52-55 |

COLOR INFORMATION

| | | | | | | | | | | |
|--|---|---|---|---|---|---|---|---|---|---|
|  |  |  |  |  |  |  |  |  |  |  |
| Black PMS NTR BLACK | Deep Smoke PMS 425C | Forest Green PMS 553C | Insignia Blue PMS 2378C | Iron Grey PMS 7540C | Maroon PMS 504C | Pink Blossom PMS 7635C | True Navy PMS 5255C | True Red PMS 200C | True Royal PMS 7687C | Winter White PMS 7527 C |