

Port Authority® Ladies Embark Soft Shell Jacket.
L307



Classic soft shell design merges with modern two-tone graphics in our Embark Soft Shell Jacket. This eye-catching way to battle rain and wind features a zip-through cadet collar with chin guard and adjustable cuffs for the perfect fit.

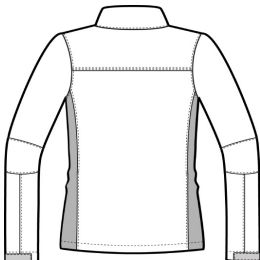
- 93/7 poly/spandex woven bonded to a laminated film insert and a 100% polyester knit lining
- 1000MM fabric waterproof rating
- 1000G/M² fabric breathability rating
- Self-fabric adjustable tab cuffs with hook and loop closures
- Front zippered pockets
- Open hem

CARE INSTRUCTIONS

Machine was cold on gentle cycle with like colors. Use mild detergent. Remove immediately. Do not allow to lay on itself when wet. Tumble dry low. Cool iron if needed. Do not dry clean.



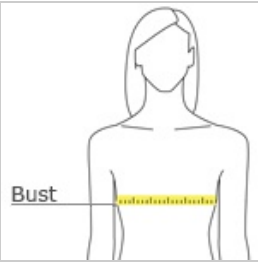
front



back

[Tips For Effectively Screen Printing Polyester Fabrics](#)

HOW TO MEASURE



BUST
Measure under the arm and around the fullest part of the bust with arms down, keeping tape horizontal.

COLOR INFORMATION