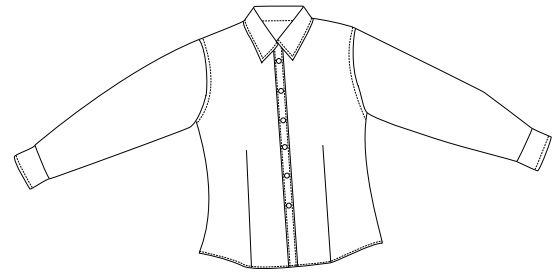


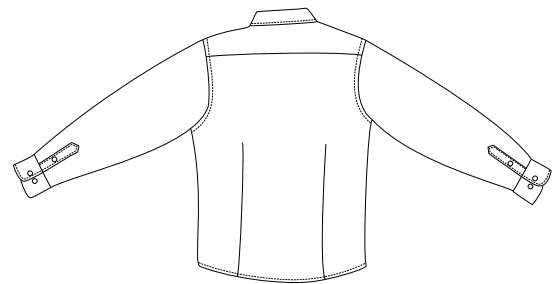


RED HOUSE

THE WINE COUNTRY LIFESTYLE



Front



Back

LADIES PINPOINT OXFORD

RH25

The impeccable appearance of non-iron cotton with the polish of pinpoint Oxford.

- 100% two-ply cotton
- Open collar
- Single-needle tailoring
- Front and back darts
- Engraved Red House buttons



Care Instructions:

Machine wash warm with like colors.
Do not bleach. Tumble dry low.
Remove promptly and hang.

Finished Measurements in Inches								
Size	XS	S	M	L	XL	XXL	Plus 1X	Plus 2X
Chest	17	19	21	23	25	26.5	28	30.5
Body	25	26	27	28	29	30.25	31.5	32.5
Sleeve	31.25	32	32.5	33	33.5	33.875	34.25	35
Collar	15	15.5	16	16.5	17	17.75	18.5	19
Dart	5.125	5.125	5.125	5.375	5.375	5.375	5.625	5.625

Colors	
	Blue
	Pink
	White

Please Note:

Colors shown are approximate and for reference only. For closest match see PMS colors, or for exact match, returnable samples and grommets samples are available.

Chest measured 1" under arm hole. Body length measured from center back neck seam to hem.
Sleeve measured from Center Back to cuff. Shoulder width measured from arm hole to arm hole.
Collar measured by circumference.

Color Chart			
Colors	Blue	Pink	White
Textile PMS	15-3909TC	12-2906TC	11-0601TC
General PMS	536C	705C	663C
Madiera (Tonal Emb)	1275	1120	1071