

SPEC SHEET + MEASUREMENTS

PORT AUTHORITY.

Port Authority® Lightweight Charger Jacket. J329

Product photo



A wear-anywhere lighter weight jacket at an out-of-this-world price. Built to charge through mild wind and rain, our Lightweight Charger Jacket features a water-resistant shell and warm fleece body lining for year-round versatility.

- 100% polyester Taslan shell
- 6.8-ounce, 100% polyester fleece body lining
- 100% polyester heavyweight sleeve lining
- Wind-resistant and water-repellent
- Molded center front zipper
- Port Pocket™ for decoration access
- Elastic cuffs with tabs for adjustability
- Elastic waistband

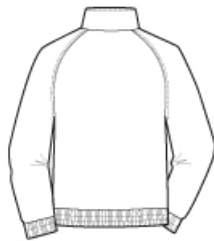
CARE INSTRUCTIONS

Machine wash cold with like colors, only non-chlorine bleach if needed. Tumble dry low, remove promptly, cool iron if necessary. Do not dry clean.

Sketches



front



back

SPEC SHEET + MEASUREMENTS

PORT AUTHORITY

Port Authority® Lightweight Charger Jacket. J329

PRODUCT MEASUREMENTS

| | XS | S | M | L | XL | 2XL | 3XL | 4XL | 5XL | 6XL |
|----------------------|-----------|-----------|-----------|-----------|-----------|-----------|-----|-----------|-----------|-----------|
| Chest | 22 1/2 | 24 | 25 1/2 | 27 | 28 1/2 | 30 | 32 | 34 | 36 | 38 |
| Body Length at Front | 25 7/8 | 26 3/4 | 27 5/8 | 28 1/2 | 29 1/2 | 30 1/2 | 31 | 31 1/2 | 32 | 32 1/2 |
| Sleeve From Shoulder | 35 1/2 | 36 1/4 | 37 | 37 3/4 | 38 1/2 | 39 1/4 | 40 | 40 3/4 | 41 1/2 | 41 1/2 |

Chest: Measured across the chest one inch below armhole when laid flat.

Body Length at Front: Measure from high point shoulder to lowest point of hem at front.

Sleeve From Shoulder: Measured from high point of shoulder to finished hem at sleeve.

SIZE CHARTS

| | XS | S | M | L | XL | 2XL | 3XL | 4XL | 5XL | 6XL |
|-------|-------|-------|-------|-------|-------|-------|-------|-------|-------|-------|
| Chest | 32-34 | 35-37 | 38-40 | 41-43 | 44-46 | 47-49 | 50-53 | 54-57 | 58-60 | 61-63 |

SPEC SHEET + MEASUREMENTS

PORT AUTHORITY.

Port Authority® Lightweight Charger Jacket. J329

HOW TO MEASURE



CHEST

Measure under the arm and around the fullest part of the chest with arms down, keeping tape horizontal.

COLORS



True Black
PMS BLACK
C



True Navy
PMS 533C