

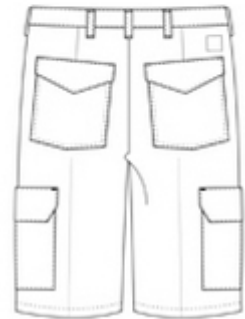
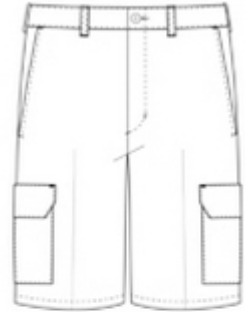


Red Kap® Industrial Cargo Short PT66



Built for the person who carries a lot of stuff, our IL50*-strength Cargo Short has snap cargo pockets to pack what you need to get work done.

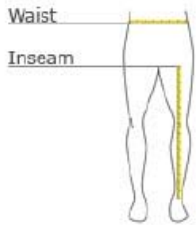
- 8-ounce, 65/35 poly/cotton twill with Touch-tex™ technology for superior color retention, soil release and wickability
- Heavy-duty brass ratcheting zipper with button closure
- Two front pockets
- 12-inch inseam
- Two back patch pockets with spade pocket flaps and snap closure
- Two patch leg pockets with inverted center pleats, one-piece pocket flaps with mitered corners and two snap closures



CARE INSTRUCTIONS

Industrial Wash. Home Wash. Light soil wash.

HOW TO MEASURE



WAIST
Measure waist at the height pants are normally worn, and keep tape comfortably loose.

INSEAM
Measure a similar style pant that fits well and is the desired length. Measure from the crotch seam to the hem.

SIZE CHART

SIZE	30	32	34	36	38	40	42	44	46	48	50
WAIST	30 1/2	32 1/2	34 1/2	36 1/2	38 1/2	40 1/2	42 1/2	44 1/2	46 1/2	48 1/2	50 1/2
INSEAM	12	12	12	12	12	12	12	12	12	12	12

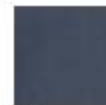
COLOR INFORMATION



Black
PMS PROCESS BLACK C



Khaki
PMS 7536 C



Navy
PMS 296 C